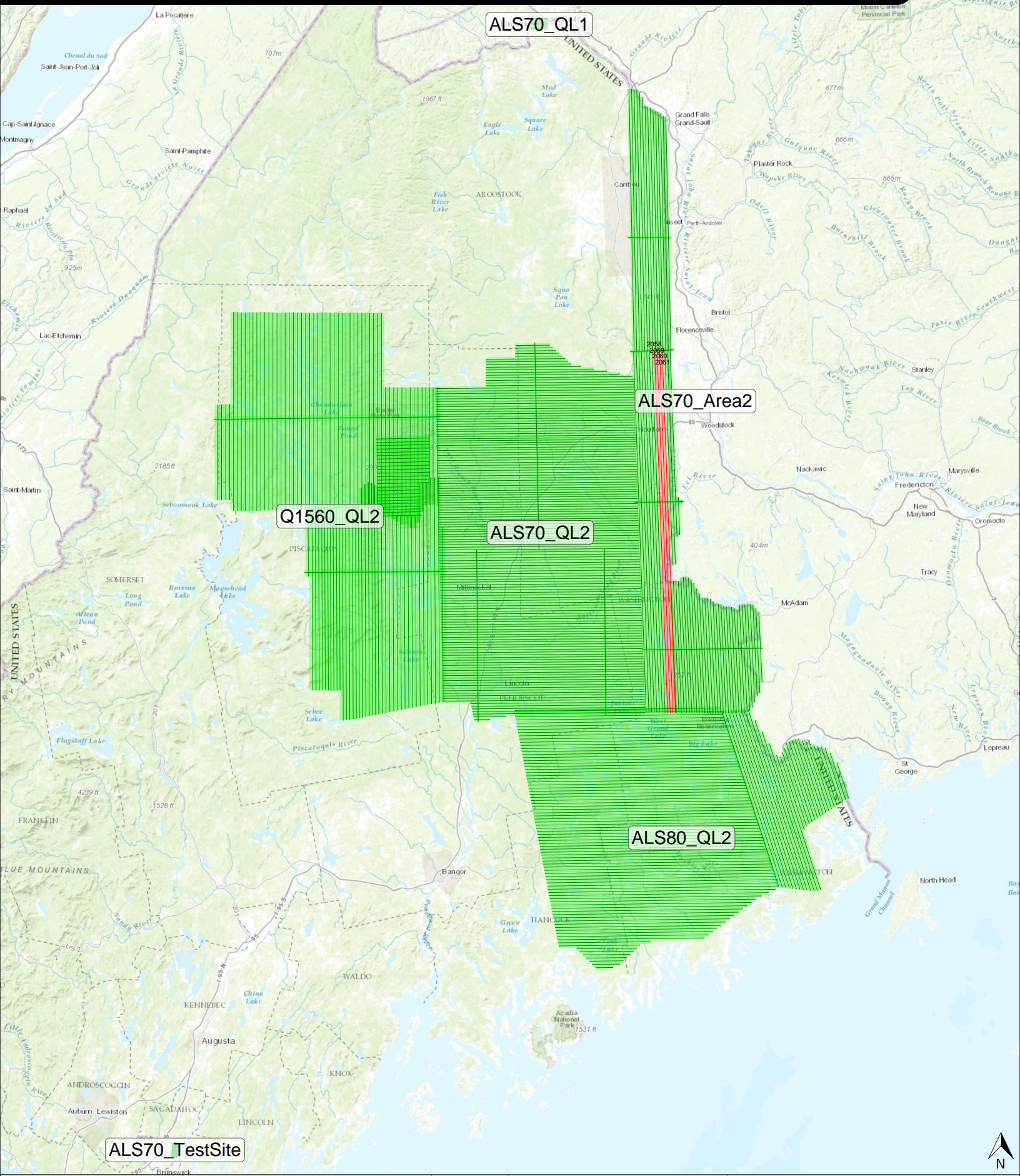




29513 Maine 2017 LiDAR (11/27/2017) - 98.2% Acquired



Total	9,840 sq miles	ALS70_Area2	66 / 70
Flown	9,661 sq miles	ALS70_QL1	11 / 11
Remaining	179 sq miles	ALS70_QL2	150 / 150
		ALS70_TestSite	17 / 17
Flown FLs	480 / 484	ALS80_QL2	114 / 114
Flown Miles	16,331 / 16,632	Q1560_QL2	122 / 122

Planned
 Flown

